

# Interragator™ EZ



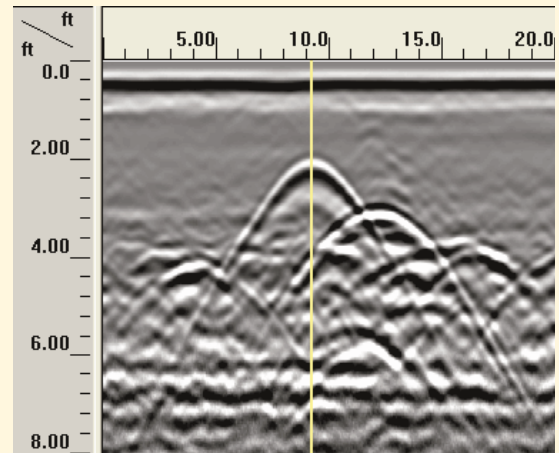
## Ground Penetrating Radar



## The Quick and Easy Way to Locate Buried Utilities

The new Interragator EZ GPR System is designed with the needs of the utility contractor and locating personnel in mind. The Interragator EZ offers the latest advancements in ground penetrating radar electronics with a simple to use operator interface. The system is lightweight and compact and can be quickly set up in a few minutes. GPR data is displayed in real-time during a survey and the reverse cursor allows immediate and accurate utility marking. A depth calibration routine makes system calibration easy.

Ground penetrating radar offers the means to detect all types of buried pipes (metallic and nonmetallic) prior to or during a directional drilling, trenching, or excavation project. And when used in conjunction with conventional locating and vacuum excavation methods, a clearer picture of the subsurface may be achieved in order to avoid potential accidents. The Interragator EZ can assist in identifying buried targets to depths of 20 ft below the subsurface depending on site conditions (soil type, surface conditions, and other factors may influence results).



Operation of the Interragator EZ is as simple as pushing a button and moving the unit along the survey path. Survey results are displayed onscreen in real-time. The reverse cursor (shown above in yellow) lets the operator mark a utility location immediately and accurately without having to use a measuring tape. The depth calibration function allows you to calibrate the system parameters for your job site soil conditions.

# Interragator™ EZ



## Ground Penetrating Radar

### General

Type: 2-wheel deployment cart/antenna assembly; built-in encoder wheel  
Dimensions: 26" (66 cm) long x 19" (48 cm) wide x 11.6" (30 cm) high  
Handle height: Nominal 40"; adjustable  
Weight: Approximately 40 lb (18 kg) with antenna

### Operational

Temperature: -10° - 40° C operating  
Humidity: 10% to 90% RH noncondensing  
Environmental: Radar control unit is environmentally sealed; can be used in inclement weather  
Survey speed: Up to 5 mph (8 kmph)

### Hardware

Processor: 32-bit Intel StrongArm RISC Processor @ 206 MHz  
Display: 8.4" (21.3 cm) active matrix, bright color LCD display, 800 x 600 pixels, sunlight readable  
Memory: 512 MB Flash Memory  
External data storage: 64 MB USB Micro Vault  
Power: 10.8-volt Lithium-ion rechargeable batteries, 1.5 - 2 hours of life depending on conditions

### Software

Windows CE operating system  
Data collection modes: Continuous or survey wheel mode  
– Survey wheel provides horizontal positioning of data; user input of horizontal reference marks available  
Display mode: User-selected; color/gray scale line scan only  
Range gain: Automatic; range gain prior to digitization for maximum system dynamic range

Filters: Automatic vertical filtering; stacking and background removable filters available  
Scan rate: 100 scans/sec  
Sampling: 512 samples/scan  
Range: User-selected, five depth selections –  
English: 3, 5, 10, 15, 20 ft (Metric: 1, 2, 3, 5, 7 m)  
Data Transfer: Via 64 MB USB MicroVault or via Microsoft Active Sync

### Antenna

Antenna: 400 MHz antenna  
Pulse width: 2.5 ns  
Transmit rate: 100 KHz  
Dimensions: 17" x 12" x 8" (30 cm x 30 cm x 20 cm)  
Weight: 10 lb (4.6 kg)

### Vermeer Manufacturing Company

1210 Vermeer Road East  
P.O. Box 200  
Pella, Iowa 50219 U.S.A.  
Phone: (641) 628-3141  
Fax: (641) 621-7734  
International Fax: +1 (641) 621-7730  
[www.vermeer.com](http://www.vermeer.com)

Call toll-free 1-888-VERMEER  
1-888-837-6337 (U.S.A. only)

Europe, Middle East and Africa:

P.O. Box 323  
4460 AS Goes  
Netherlands  
Phone: +31 113 272700  
Fax: +31 113 272727

Equipment shown is for illustrative purposes only and may display optional accessories or components. Please contact your local dealer for more information on machine specifications. Vermeer Manufacturing Company reserves the right to make changes in engineering, design and specifications; add improvements; or discontinue manufacturing at any time without notice or obligation. VERMEER and VERMEER LOGO are registered trademarks of Vermeer Manufacturing Company in the U.S. and/or other countries. Interragator is a trademark of Vermeer Manufacturing Company.

© 2003 Vermeer Manufacturing Company. All Rights Reserved.

Part # 296273045